



## “Wireless Presentation”: Quick Guide

### Wireless Präsentation

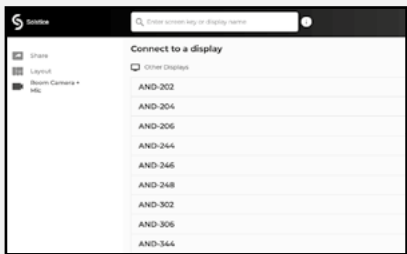
#### Set Up “Wireless Presentation”

1. Connect to one of the following WLANs:  
uzh, uzh-5GHZ
2. Turn on the room’s system and select “Wireless Präsentation” in Room Control. Only rooms equipped with “Wireless Presentation” have this option.
3. Follow the on-screen instructions.



#### Connect to “Wireless Presentation”

1. Open the Solstice app on your device.
2. Select your room.
3. Enter the 4-digit PIN that appears at the bottom left of the in-room screen.



#### Sharing and Ending a Presentation

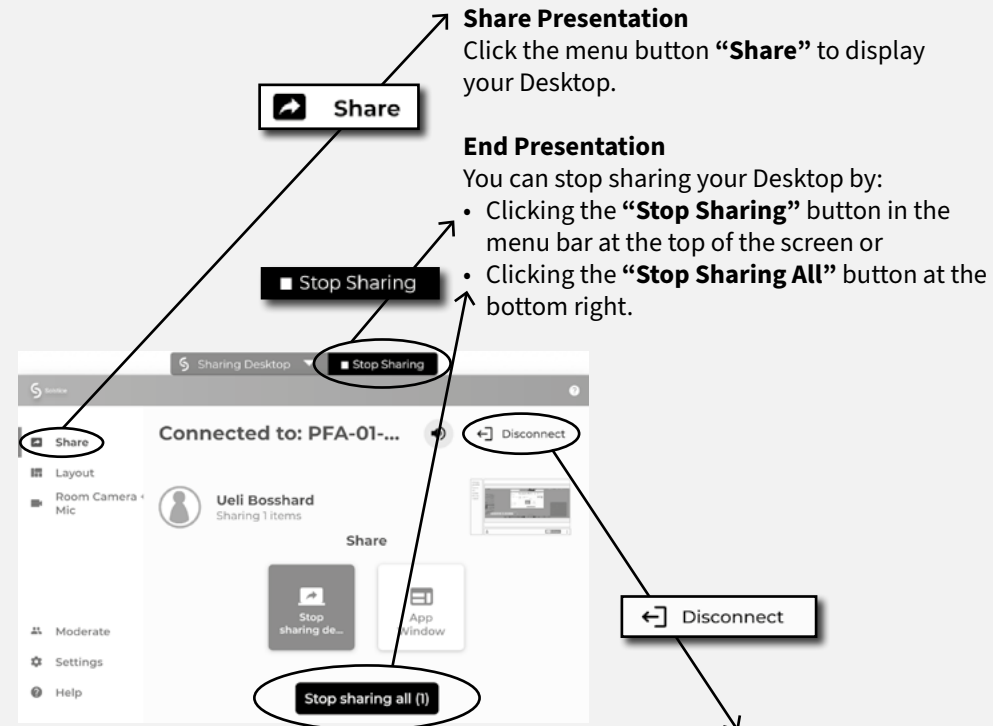
##### Share Presentation

Click the menu button “Share” to display your Desktop.

##### End Presentation

You can stop sharing your Desktop by:

- Clicking the “Stop Sharing” button in the menu bar at the top of the screen or
- Clicking the “Stop Sharing All” button at the bottom right.



##### End Connection with “Wireless Presentation”

Click “Disconnect” at the top right to disconnect from “Wireless Presentation.”

##### Further Information

More information on “Wireless Presentation” is available at <https://t.uzh.ch/1st>

